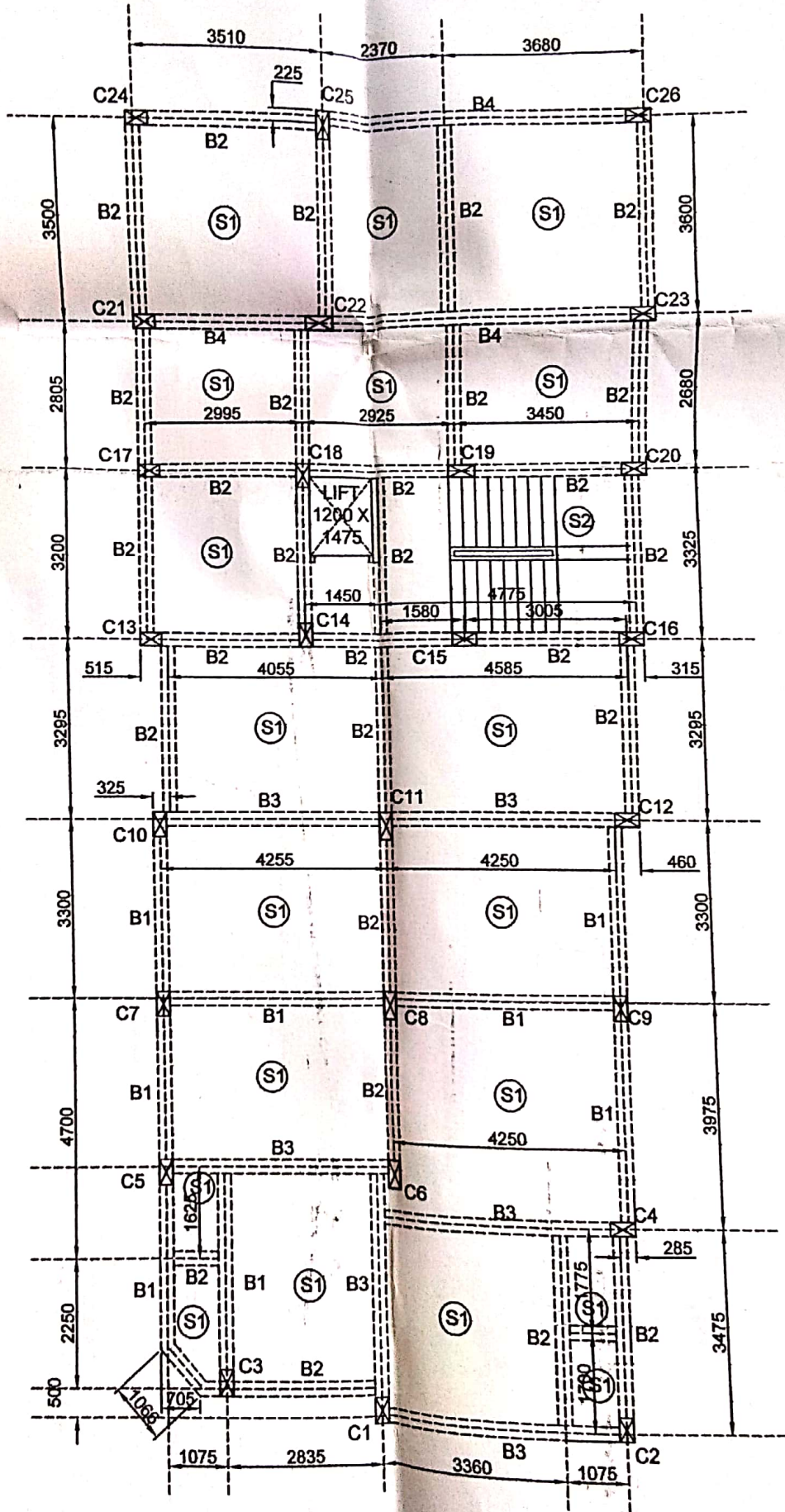


BLDG/70904



SLAB & BEAM LAYOUT PLAN

FOUNDATION SCHEDULE

FDN MKD	F.D.N UNDER COLUMN	FOUND SIZE L1XL2 (mmxmm)	d (mm)	D (mm)	REINFORCEMENT
(F1)	C2,C13,C17,C21,C24	2500 X 2500	250	400	16 T @ 150 c/c(B/W)
(F2)	C11,C25	3200 X 3200	250	600	16 T @ 125 c/c(B/W)
(F3)	C6,C8,C22	3660 X 2800	250	600	16 T @ 125c/c(B/W)
(F4)	C1-C3	AS PAR DWG.		500	16T @ 125 c/c(B/W) IN TWO LAYERS
(F5)	C14+C15+C18+C19 +LIFT	AS PAR DWG.		500	16T @ 125 c/c(B/W) IN TWO LAYERS
(F6)	C20+C23	3160 X 5825		500	16T @ 125 c/c(B/W) IN TWO LAYERS
(F7)	ALL OTHERS	3000 X 3000	250	500	16 T @ 150 c/c(B/W)

COLUMN SCHEDULE

COLUMN MKD.	SECTION	REINFORCE-MENT	TIE
C2,C13,C17,C21,C24	250 X 450	8 - 16T	2L-8T@150 c/c
C6,C8,C11,C19,C22,C25	250 X 500	10 - 20T	4L-8T@150 c/c
ALL OTHERS	250 X 450	10 - 16T	2L-8T@150 c/c

SLA

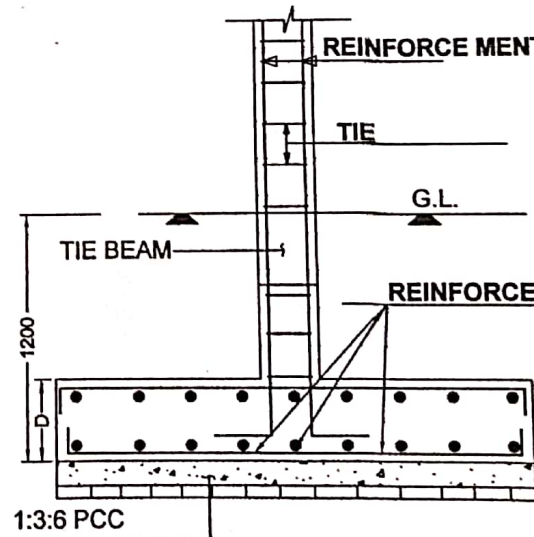
SLAB MKD.

(S1)

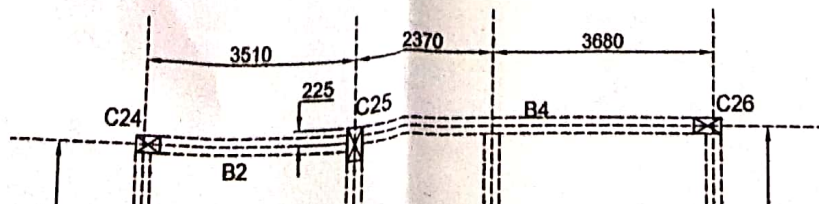
(S2)

BEAM SCHEDULE

BEAM MKD.	SECTION	REINF.(SUPPORT)		REINF.(SPAN)		STIRRUP
		TOP	BOTTOM	TOP	BOTTOM	
B1	250X450	3- 16 ∇ + 2- 16 ∇	3-16 ∇	3-16 ∇	5- 16 ∇	2L -8T@150 c/c
B2	250X400	3- 12 ∇ + 2- 16 ∇	2-16 ∇	3-12 ∇	4-16 ∇	2L -8T@150 c/c
B3	250X400	3- 16 ∇ + 2- 16 ∇	3-16 ∇	3-16 ∇	5-16 ∇	2L -8T@ 150 c/c
B4	250 X500	3- 20 ∇ + 2- 20 ∇	3-20 ∇	3-20 ∇	5-20 ∇	2L -8T@ 150 c/c
ALL TIE BEAMS	250 X450	5- 12 ∇	3-12 ∇	3-12 ∇	5-12 ∇	2L -8T@150 c/c



DETAIL OF COMBINED FOOTING(TYP.)



PARTY'S COPY

Structural plan and design calculation as submitted by the structural engineer have been kept with B.P No. 2018120029 Date 22-5-18 for record of the Kolkata Municipal Corporation without verification No. deviation from the submitted structural plan should be made at the time of erection without submitting fresh structural plan along with design calculation and stability certificate in the prescribed form, necessary steps should be taken for the safety of the adjoining premises public and private properties and safety of human life during construction.

[Signature]
EXECUTIVE ENGINEER/ASST. ENGINEER
BOROUGH NO. XII

2017120213
Building Department Borough - XII
RECEIVED
DATE 22-5-18
The Kol. Mpl. Corporation